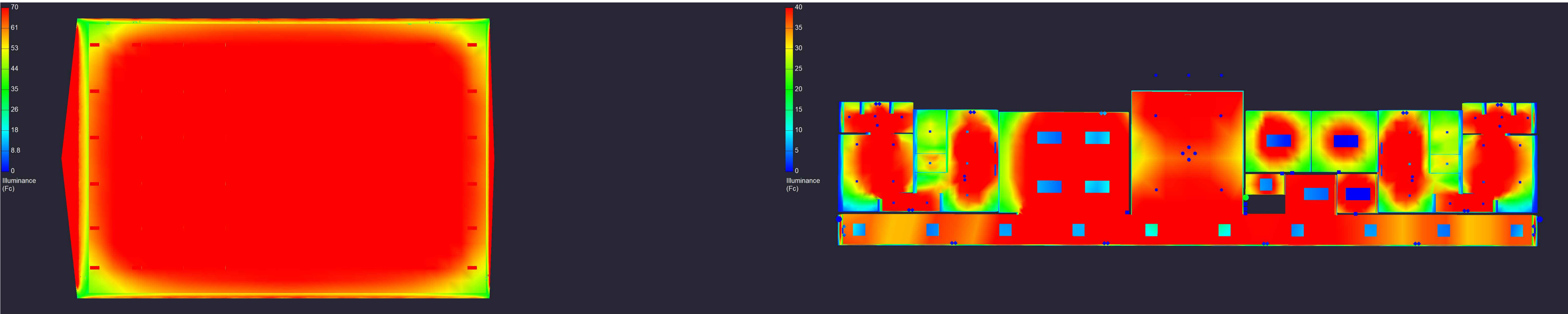
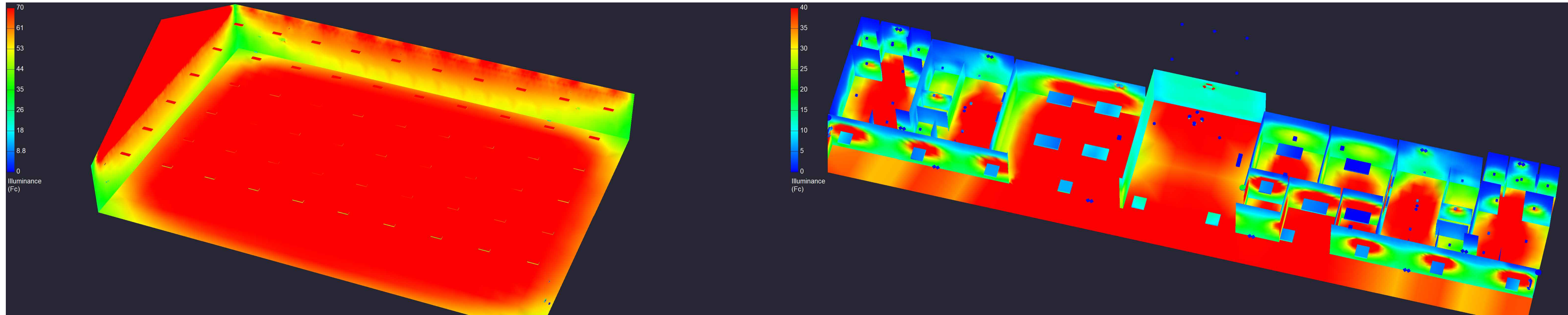


1 **PSEUDO COLOR PLAN VIEW RENDERING**  
SCALE: NTS



2 **GRAYSCALE PLAN VIEW RENDERING**  
SCALE: NTS



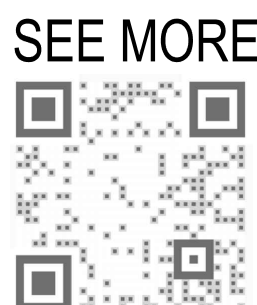
3 **ISOMETRIC PSEUDO COLOR RENDERING**  
SCALE: NTS

National Lighting Program Vendor  
For pricing and technical assistance contact:  
CBMC INC  
317-626-1590  
Pete Miller - Program Manager- [pmiller@cbmcinc.com](mailto:pmiller@cbmcinc.com)  
Jennifer Karesh-Project Manager - [jkaresh@cbmcinc.com](mailto:jkaresh@cbmcinc.com)  
William Proctor - Project Engineer - [wproctor@cbmcinc.com](mailto:wproctor@cbmcinc.com)

All electrical work shall comply with National, State, and Local codes including and not limited to the National Electric Code, NFPA 101 Life Safety Code, ASHREA and /or IECC Energy Codes.

The information contained in this document is proprietary to CBMC Lighting Solutions. This document is prepared for a specific site and incorporates calculations based on data available from the client at this time. By accepting and using this document, the recipient agrees to protect its contents from further dissemination, (other than that within the organization necessary to evaluate such specification) without the written permission of CBMC Lighting Solutions. the contents of this document are not to be reproduced or copied in whole or in part without the written permission of CBMC Lighting Solutions. copyright © 2025 CBMC Lighting Solutions all rights reserved.

**CBMC** • LIGHTING SOLUTIONS  
5855 KOPETSKY DR. SUITE G. | INDIANAPOLIS, IN 46217  
317-780-8350 | [WWW.CBMCINC.COM](http://WWW.CBMCINC.COM)



This lighting pattern represents illumination levels calculated from laboratory data taken under controlled conditions in accordance with IESNA approved methods. Actual performance of any manufacturer's luminaire may vary due to variation in electrical voltage, tolerance in lamps and LED lumen package, location adjustments, and other variable field conditions.

Contractor to check and verify all dimensions on site before commencing any work shown.

**RWB**  
*Linares*  
ARCHITECTURE  
1600 SOUTH DIXIE HWY., SUITE 400  
BOCA RATON, FLORIDA 33432  
PHONE 561-391-0081 FAX 561-391-0085  
EMAIL [mail@rwb-arch.com](mailto:mail@rwb-arch.com)

FLORIDA INDOOR TENNIS  
Renderings  
POMPANO BEACH, FLORIDA

Scale:	1/16" = 1'-0"	Project No:	CB23408-SL-R2	Revision
Date:	1/11/25	Drawn By:	WP	2
Checked By:	PM / JK			

PZ23-12000009

03/05/2025